

A 车削

B 铣削

C 钻削

D 深孔加工

E 圆柄刀具

F 镗削

G 旋转刀柄

H 技术信息

F

镗削 BORING



A 车削

B 铣削

C 钻削

D 深孔加工

E 圆柄刀具

F 镗削

G 旋转刀柄

H 技术信息

镗削

Boring

- **PSC镗刀**

PSC Boring Tools F03

90°双刃镗刀 (TCR)
90° Double-Edges Boring Tools(TCR) F03

90°双刃镗刀 (TTR)
90° Double-Edges Boring Tools(TTR) F05

80°双刃镗刀 (TSR)
80° Double-Edges Boring Tools(TSR) F07

小孔径精镗刀 (SBZ)
Fine Boring for Small Diameter(SBZ) F09

微调精镗刀镗刀 (FBZ)
Micro-Adjustabal Boring Tools(FBZ) F12

TMG21镗刀
TMG21 Boring Tools F13

90°双刃镗刀 (TCR)
90° Double-Edges Boring Tools(TCR) F13

90°双刃镗刀 (TTR)
90° Double-Edges Boring Tools(TTR) F15

80°双刃镗刀 (TSR)
80° Double-Edges Boring Tools(TSR) F17

90°双刃镗刀
90° Double-Edges Boring Tools F19

小孔径精镗刀 (SBZ)
Fine Boring for Small Diameter(SBZ) F21

微调精镗刀 (CBZ)
Micro-Adjustabal Boring Tools(CBZ) F24

微调精镗刀 (FBZ)
Micro-Adjustabal Boring Tools(FBZ) F25

- **TMG21模块式工具系统**

TMG21 Modular Tooling System F27

TMG21手柄模块
TMG21 Base Tool holders F27

TMG21等径中间模块
TMG21 Extensions F35

TMG21变径中间模块
TMG21 Reductions F36

- **大直径镗刀**

Boring Tools for Large Diameter F37

大直径双刃镗刀 (SCC)
Double-Edges Boring Tools(SCC) F37

大直径双刃镗刀 (MCN)
Double-Edges Boring Tools(MCN) F39

大直径微调精镗刀
Fine Boring Tools for Large Diameter F41

大直径镗刀专用刀柄
Toolholders for Large Diameter Boring F43

- **整体式粗镗刀**

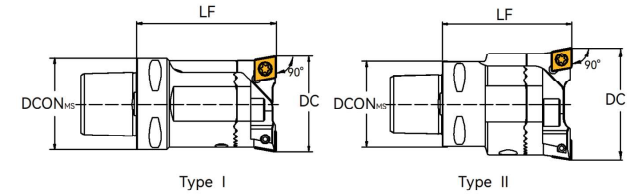
Rough Boring Tools F45

直角型粗镗刀 (TZC)
Straight Form Rough Boring Tools(TZC) F45

倾斜型粗镗刀 (TQC)
Clino-form Rough Boring Tools(TQC) F48

90°双刃镗刀 (TCR)

90° Double-Edges Boring Tools(TCR)



- 中心通水, 冷却液压力 ≤ 15bar
Internal coolant, coolant pressure ≤ 15bar

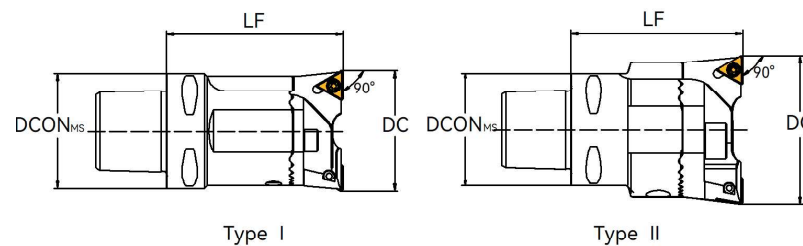
接口类型 Interface type	型号 Model	镗头型号 Cartridge	镗孔尺寸DC Boring range	尺寸 Size(mm)		刀片 Insert
				DCON _{MS}	LF	
PSC3	PSC3-TCR9033-050	TCR9033.CC06A	33-43	32	50	CCMT060204
		TCR9038.CC06B	38-48			
PSC3	PSC3-TCR9042-060	TCR9042.CC09A	42-54	32	60	CCMT09T308
PSC4	PSC4-TCR9042-060	TCR9042.CC09A	42-54	40	60	CCMT09T308
		TCR9048.CC09B	48-59			
PSC4	PSC4-TCR9053-065	TCR9053.CC09A	53-70	40	65	CCMT09T308
PSC5	PSC5-TCR9053-070	TCR9053.CC09A	53-70	50	70	CCMT09T308
		TCR9061.CC09B	61-78			
PSC5	PSC5-TCR9068-075	TCR9068.CC12A	68-88	50	75	CCMT09T308
PSC6	PSC6-TCR9068-080	TCR9068.CC12A	68-88	63	80	CCMT120408
		TCR9075.CC12B	75-95			
PSC6	PSC6-TCR9084-080	TCR9084.CC12A	84-115	63	80	CCMT120408
		TCR9100.CC12B	100-131			
PSC8	PSC8-TCR90110-090	TCR9110.CC12A	110-155	80	90	CCMT120408
		TCR9132.CC12B	132-177			
PSC10	PSC10-TCR90150-115	TCR9150.CC12A	150-205	100	115	CCMT120408
		TCR9180.CC12B	180-235			

- 镗刀标准配置镗刀头TCR90****A, TCR90****B 镗刀头需单独订购
TCR90****A cartridges are contained, TCR90****B cartridges are sold separately
- 刀片需单独订购
Inserts are sold separately

螺钉 Screw	扳手 Torx wrench	刀体型号 Boring body	螺钉 Screw	扳手 Hex wrench	垫圈 Washer	扳手 Hex wrench	型式 Type
C025A07IP	8IP	PSC3-TR33-50	MS05016N	S4	DT05	S1.5	I
C035A08IP	15IP	PSC3-TR42-60	MS06020N	S5	DT06	S1.5	II
C035A08IP	15IP	PSC4-TR42-60	MS06020N	S5	DT06	S1.5	I
C035A08IP	15IP	PSC4-TR53-65	MS08020N	S6	DT08	S2.5	II
C035A08IP	15IP	PSC5-TR53-70	MS08020N	S6	DT08	S2.5	I
C050A12IP	20IP	PSC5-TR68-75	MS10025N	S8	D10IP	S2.5	II
C050A12IP	20IP	PSC6-TR68-80	MS10025N	S8	D10IP	S2.5	I
C050A12IP	20IP	PSC6-TR84-80	MS12025N	S10	DT12	S3	II
C050A12IP	20IP	PSC8-TR110-90	MS10030N	S8	D10IP	S3	II
C050A12IP	20IP	PSC10-TR150-115	MS10030N	S8	D10IP	TS3	II

90°双刃镗刀 (TTR)

90° Double-Edges Boring Tools(TTR)



- 中心通水, 冷却液压力 ≤ 15bar

Internal coolant, coolant pressure ≤ 15bar

接口类型 Interface type	型号 Model	镗头型号 Cartridge	镗孔尺寸DC Boring range	尺寸 Size(mm)		刀片 Insert
				DCON _{ms}	LF	
PSC3	PSC3-TTR9033-050	TTR9033.CC06A	33-43	32	50	TCMT090204
		TTR9038.CC06B	38-48			
PSC3	PSC3-TTR9042-060	TTR9042.CC09A	42-54	32	60	TCMT110204
PSC4	PSC4-TTR9042-060	TTR9042.CC09A	42-54	40	60	TCMT110204
		TTR9048.CC09B	48-59			
PSC4	PSC4-TTR9053-065	TTR9053.CC09A	53-70	40	65	TCMT110204
PSC5	PSC5-TTR9053-070	TTR9053.CC09A	53-70	50	70	TCMT110204
		TTR9061.CC09B	61-78			
PSC5	PSC5-TTR9068-075	TTR9068.CC12A	68-88	50	75	TCMT16T308
PSC6	PSC6-TTR9068-080	TTR9068.CC12A	68-88	63	80	TCMT16T308
		TTR9075.CC12B	75-95			
PSC6	PSC6-TTR9084-080	TTR9084.CC12A	84-115	63	80	TCMT16T308
		TTR9100.CC12B	100-131			
PSC8	PSC8-TTR90110-090	TTR9110.CC12A	110-155	80	90	TCMT16T308
		TTR9132.CC12B	132-177			
PSC10	PSC10-TTR90150-115	TTR9150.CC12A	150-205	100	115	TCMT16T308
		TTR9180.CC12B	180-235			

- 镗刀标准配置镗刀头TTR90****A, TTR90****B 镗刀头需单独订购

TTR90****A cartridges are contained, TTR90****B cartridges are sold separately

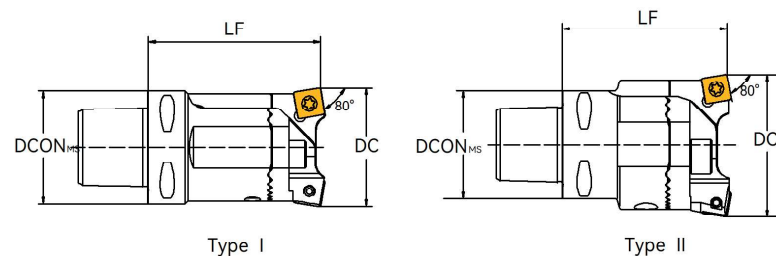
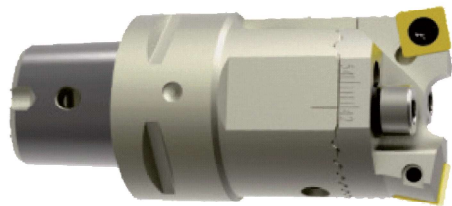
- 刀片需单独订购

Inserts are sold separately

螺钉 Screw	扳手 Torx wrench	刀体型号 Boring body	螺钉 Screw	扳手 Hex wrench	垫圈 Washer	扳手 Hex wrench	型式 Type
C022A06IP	7IP	PSC3-TR33-50	MS05016N	S4	DT05	S1.5	I
C025A07IP	T08	PSC3-TR42-60	MS06020N	S5	DT06	S1.5	II
C025A07IP	T08	PSC4-TR42-60	MS06020N	S5	DT06	S1.5	I
C025A07IP	T08	PSC4-TR53-65	MS08020N	S6	DT08	S2.5	II
C025A07IP	T08	PSC5-TR53-70	MS08020N	S6	DT08	S2.5	I
C035A08IP	15IP	PSC5-TR68-75	MS10025N	S8	D10IP	S2.5	II
C035A08IP	15IP	PSC6-TR68-80	MS10025N	S8	D10IP	S2.5	I
C035A08IP	15IP	PSC6-TR84-80	MS12025N	S10	DT12	S3	II
C035A08IP	15IP	PSC8-TR110-90	MS10030N	S8	D10IP	S3	II
C035A08IP	15IP	PSC10-TR150-115	MS10030N	S8	D10IP	TS3	II

80°双刃镗刀 (TSR)

80° Double-Edges Boring Tools(TSR)



- 中心通水, 冷却液压力 ≤ 15bar
Internal coolant, coolant pressure ≤ 15bar

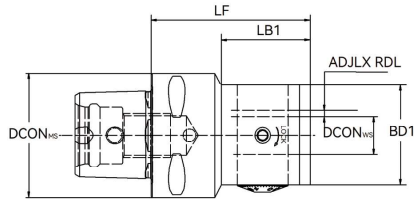
接口类型 Interface type	型号 Model	镗头型号 Cartridge	镗孔尺寸DC Boring range	尺寸 Size(mm)		刀片 Insert
				DCON _{ms}	LF	
PSC3	PSC3-TSR8042-60	TSR8042.SC09	42-54	32	60	SCMT09T308
PSC4	PSC4-TSR8042-60	TSR8042.SC09	42-54	40	60	SCMT09T308
PSC4	PSC4-TSR8053-65	TSR8053.SC09	53-70	40	65	SCMT09T308
PSC5	PSC5-TSR8053-70	TSR8053.SC09	53-70	50	70	SCMT09T308
PSC5	PSC5-TSR8068-75	TSR8068.SC12	68-88	50	75	SCMT120408
PSC6	PSC6-TSR8068-80	TSR8068.SC12	68-88	63	80	SCMT120408
PSC6	PSC6-TSR8084-80	TSR8084.SC12	84-115	63	80	SCMT120408
PSC8	PSC8-TSR80110-90	TSR80110.SC12	110-155	80	90	SCMT120408
PSC10	PSC10-TSR80150-115	TSR80150.SC12	150-205	100	115	SCMT120408

- 刀片需单独订购
Inserts are sold separately

螺钉 Screw	扳手 Torx wrench	刀体型号 Boring body	螺钉 Screw	扳手 Hex wrench	垫圈 Washer	扳手 Hex wrench	型式 Type
C035A08IP	15IP	PSC3-TR42-60	MS06020N	S5	DT06	S1.5	II
C035A08IP	15IP	PSC4-TR42-60	MS06020N	S5	DT06	S1.5	I
C035A08IP	15IP	PSC4-TR53-65	MS08020N	S6	DT08	S2.5	II
C035A08IP	15IP	PSC5-TR53-70	MS08020N	S6	DT08	S2.5	I
C050A12IP	20IP	PSC5-TR68-75	MS10025N	S8	D10IP	S2.5	II
C050A12IP	20IP	PSC6-TR68-80	MS10025N	S8	D10IP	S2.5	I
C050A12IP	20IP	PSC6-TR84-80	MS12025N	S10	DT12	S3	II
C050A12IP	20IP	PSC8-TR110-90	MS10030N	S8	D10IP	S3	II
C050A12IP	20IP	PSC10-TR150-115	MS10030N	S8	D10IP	TS3	II

小孔径精镗刀 (SBZ)

Fine Boring for Small Diameter(SBZ)

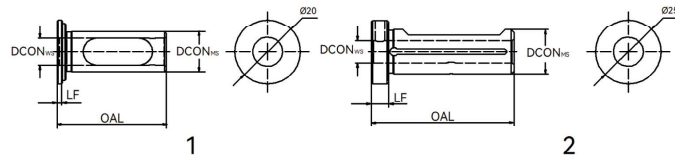


接口类型 Interface type	型号 Model	镗头型号 Cartridge	镗孔尺寸DC Boring range	尺寸 Size(mm)					
				DCON _{MS}	DCON _{WS}	ADJLX RDL	LF	LB1	BD1
PSC4	PSC4-SBZ-8	TSR8042.SC09	3-11	40	8	1	50	28	40
PSC5	PSC5-SBZ-12	TSR8042.SC09	3-28	50	12	1.5	55	31.5	50
PSC6	PSC6-SBZ-16	TSR8053.SC09	3-50	63	16	2.5	75	46	63

- 刀片需单独订购
Inserts are sold separately

变径套

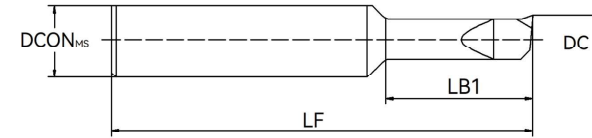
Re Ducing Sleeve



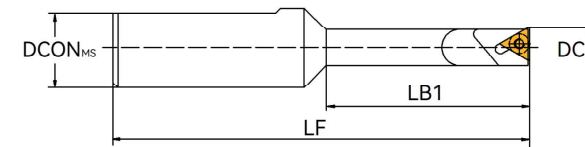
型号 Model	精镗孔器 Boring range	尺寸 Size(mm)				结构型式 DSGN
		DCON _{MS}	DCON _{WS}	LF	OAL	
SBJ-12C8	21CD50-SBZ-12	8	12	2	30	1
SBJ-16C8	21CD63-SBZ-16	8	16	6	48	2

整体硬质合金镗刀杆

Solid Carbide Boring Bar



型号 Model	镗孔尺寸DC Boring range	尺寸 Size(mm)		
		DCON _{MS}	LB1	LF
YBJ-0803-09	3~5	8	9	38
YBJ-0805-15	5~7	8	15	43
YBJ-0807-21	7~9	8	21	49
YBJ-0809-27	9~11	8	27	54

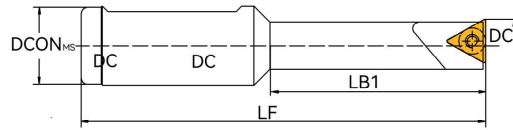


型号 Model	镗孔尺寸DC Boring range	尺寸 Size(mm)			刀片 Insert	螺钉 Screw	扳手 Torx wrench
		DCON _{MS}	LB1	LF			
YSBJ-1608-040	8~11	16	40	82	TBGT060102L	C020S05J	6IP
YSBJ-1610-050	10~13	16	50	92	TBGT060102L	C020S05J	6IP
YSBJ-1612-060	12~17	16	60	102	TPGH090204L	C025A07IP	8IP
YSBJ-1616-080	16~21	16	80	122	TPGH090204L	C025A07IP	8IP
YSBJ-1620-100	20~26	16	100	142	TPGH110304L	C030A07IP	9IP

- 刀片需单独订购
Inserts are sold separately

镗刀杆 - 标准型

Boring Bar-Standard

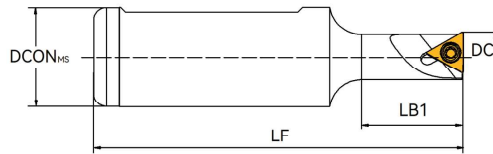


- 刀片需单独订购
Inserts are sold separately

型号 Model	镗孔尺寸DC Boring range	尺寸 Size(mm)			刀片 Insert	螺钉 Screw	扳手 Torx wrench
		DCON _{ms}	LB1	LF			
SBJ-1208-30	8~10	12	32	60	TBGT060102L	C020S05J	6IP
SBJ-1210-40	10~12	12	40	68	TBGT060102L	C020S05J	6IP
SBJ-1212-48	12~14	12	48	76	TPGH090204L	C025A07IP	8IP
SBJ-1214-56	14~16	12	56	84	TPGH090204L	C025A07IP	8IP
SBJ-1216-60	16~18	12	60	88	TPGH090204L	C025A07IP	8IP
SBJ-1218-60	18~20	12	60	88	TPGH110304L	C030A07IP	9IP
SBJ-1220-60	20~24	12	60	88	TPGH110304L	C030A07IP	9IP
SBJ-1224-60	24~28	12	60	88	TPGH110304L	C030A07IP	9IP
SBJ-1608-32	8~11	16	32	74	TBGT060102L	C020S05J	6IP
SBJ-1610-40	10~13	16	40	82	TBGT060102L	C020S05J	6IP
SBJ-1612-53	12~17	16	53	95	TPGH090204L	C025A07IP	8IP
SBJ-1616-68	16~21	16	68	110	TPGH090204L	C025A07IP	8IP
SBJ-1620-83	20~26	16	83	125	TPGH110304L	C030A07IP	9IP
SBJ-1625-90	25~32	16	90	132	TPGH110304L	C030A07IP	9IP
SBJ-1630-90	30~42	16	90	132	TPGH110304L	C030A07IP	9IP
SBJ-1640-90	40~50	16	90	132	TPGH110304L	C030A07IP	9IP

镗刀杆 - 短型

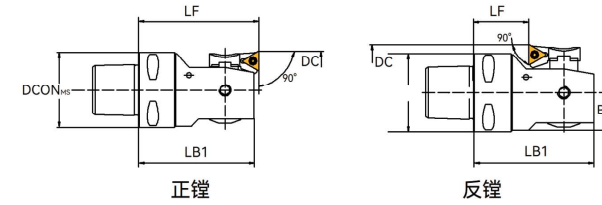
Boring Bar-Short



型号 Model	镗孔尺寸DC Boring range	尺寸 Size(mm)			刀片 Insert	螺钉 Screw	扳手 Torx wrench
		DCON _{ms}	LB1	LF			
SBJ-1608-16	8~11	16	16	58	TBGT060102L	C020S05J	6IP
SBJ-1610-20	10~13	16	20	62	TBGT060102L	C020S05J	6IP
SBJ-1612-24	12~17	16	24	66	TPGH090204L	C025A07IP	8IP
SBJ-1616-32	16~21	16	32	74	TPGH090204L	C025A07IP	8IP
SBJ-1620-32	20~26	16	32	74	TPGH110304L	C030A07IP	9IP
SBJ-1625-32	25~32	16	32	74	TPGH110304L	C030A07IP	9IP

微调精镗刀镗刀 (FBZ)

Micro-Adjustable Boring Tools(FBZ)



接口类型 Interface type	型号 Model	尺寸 Size(mm)			正镗 Forward boring		反镗 Back boring		刀片座 Cartridge	螺钉 Screw
		DCON _{ms}	LB1	B	DC	LF	DC	LF		
PSC3	PSC3-FBZ033010-50	32	48	16	33-60	50	44-60	22	BZ03...	SS04010A
PSC4	PSC4-FBZ042013-60	40	58	20	42-74	60	57-74	24	BZ04...	SS05010A
PSC5	PSC5-FBZ053017-60	50	58	25	53-95	60	68-95	20	BZ05...	SS06012A
PSC6	PSC6-FBZ068032-80	63	78	32.5	68-152	80	84-152	30	BZ06...	SS08012A
PSC8	PSC8-FBZ098053-80	80	88	45	98-203	90	98-203	40	BZ06...	SS08012A

- 刀片座需单独订购
Cartridges are sold separately
- 刀片需要单独订购
Inserts are sold separately

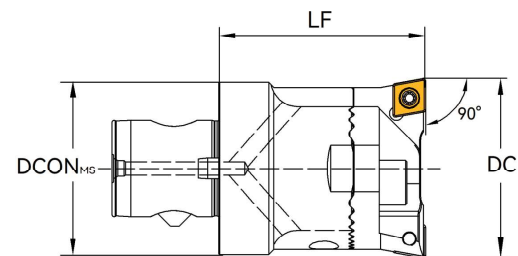
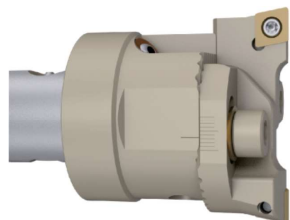
刀片座/ Cartridges

型号 Model	正镗 Forward boring	反镗 Back boring	镗刀 Boring Tools	刀片 Insert	螺钉 Torx wrench	扳手 Torx wrench
BZ031.TP08	33~43	-	PSC3-FBZ033010-50	TP□□0802□□L	C020S05J	6IP
BZ032.TP08	42~52	44~52	PSC3-FBZ033010-50			
BZ033.TP08	50~60	52~60	PSC3-FBZ033010-50			
BZ041.TP11	42~55	-	PSC4-FBZ042013-60			
BZ042.TP11	52~65	57~65	PSC4-FBZ042013-60			
BZ043.TP11	61~74	66~74	PSC4-FBZ042013-60			
BZ051.TP11	53~70	68~70	PSC5-FBZ053017-60			
BZ052.TP11	64~81	70~81	PSC5-FBZ053017-60			
BZ053.TP11	78~95	84~95	PSC5-FBZ053017-60			
BZ061.TP11	68~100	84~100	PSC6-FBZ068032-80			
BZ062.TP11	98~151	98~151	PSC8-FBZ098053-90			
	95~127	107~127	PSC6-FBZ068032-80			
	125~178	125~178	PSC8-FBZ098053-90			
BZ063.TP11	132~152	132~152	PSC6-FBZ068032-80			
	150~203	150~203	PSC8-FBZ098053-90			
	BZ031.CC06	33~43	-	PSC3-FBZ033010-50	CC□□0602	C025A07IP
BZ041.TC11	42~52	-	PSC4-FBZ042013-60	TC□□1102	C025A07IP	8IP
BZ051.TC11	53~70	68~70	PSC5-FBZ053017-60			
BZ061.TC11	68~100	84~100	PSC6-FBZ068032-80			
	98~151	98~151	PSC8-FBZ098053-90			

- 刀片需要单独订购
Inserts are sold separately

90°双刃镗刀 (TCR)

90° Double-Edge Boring Tools(TCR)



- 中心通水, 冷却液压力 ≤ 15bar
Internal coolant, coolant pressure ≤ 15bar

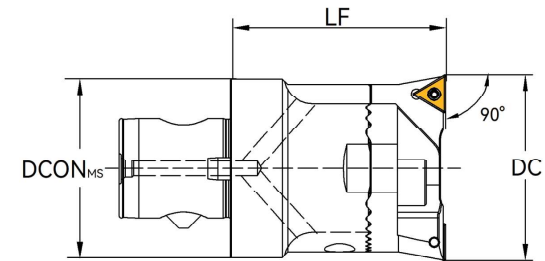
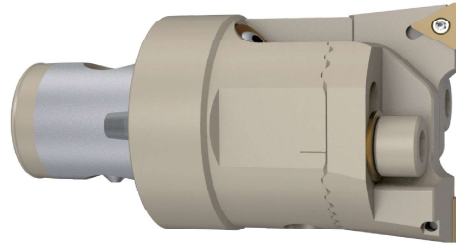
接口类型 Interface type	型号 Model	镗头型号 Cartridge	镗孔尺寸DC Boring range	尺寸 Size(mm)		刀片 Insert
				DCON _{H95}	LF	
21CD25	21CD25-TCR9026-045	TCR9026.CC06A	26-34	25	45	CCMT060204
		TCR9030.CC06B	30-38			
21CD32	21CD32-TCR9033-050	TCR9033.CC06A	33-43	32	50	CCMT060204
		TCR9038.CC06B	38-48			
21CD40	21CD40-TCR9042-060	TCR9042.CC09A	42-54	40	60	CCMT09T308
		TCR9048.CC09B	48-59			
21CD50	21CD50-TCR9053-060	TCR9053.CC09A	53-70	50	60	CCMT09T308
		TCR9061.CC09B	61-78			
21CD63	21CD63-TCR9068-080	TCR9068.CC12A	68-88	63	80	CCMT120408
		TCR9075.CC12B	75-95			
21CD63	21CD63-TCR9084-080	TCR9084.CC12A	84-115	63	80	CCMT120408
		TCR9100.CC12B	100-131			
21CD80	21CD80-TCR90110-090	TCR9110.CC12A	110-155	80	90	CCMT120408
		TCR9132.CC12B	132-177			
21CD100	21CD100-TCR90150-115	TCR9150.CC12A	150-205	100	115	CCMT120408
		TCR9180.CC12B	180-235			

- 镗刀标准配置镗刀头TCR90****A, TCR90****B 镗刀头需单独订购
TCR90****A cartridges are contained, TCR90****B cartridges are sold separately
- 刀片需单独订购
Inserts are sold separately

螺钉 Screw	扳手 Torx wrench	刀体型号 Boring body	螺钉 Screw	扳手 Hex wrench	垫圈 Washer	扳手 Hex wrench
C025A07IP	8IP	21CD25-TR26-045	MS04016N	S3	DT04	S1.5
C025A07IP	8IP	21CD32-TR33-050	MS05016N	S4	DT05	S1.5
C035A08IP	15IP	21CD40-TR42-060	MS06020N	S5	DT06	S2.5
C035A08IP	15IP	21CD50-TR53-060	MS08020N	S6	DT08	S2.5
C050A12IP	20IP	21CD63-TR68-080	MS10025N	S8	DT10	S3
C050A12IP	20IP	21CD63-TR84-080	MS12025N	S10	DT12	S3
C050A12IP	20IP	21CD80-TR110-090	MS10030N	S8	DT10	S3
C050A12IP	20IP	21CD100-TR150-115	MS10030N	S8	DT10	TS3

90°双刃镗刀 (TTR)

90° Double-Edge Boring Tools(TTR)



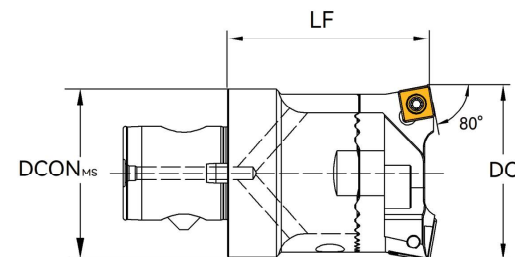
接口类型 Interface type	型号 Model	镗头型号 Cartridge	镗孔尺寸DC Boring range	尺寸 Size(mm)		刀片 Insert
				DCON _{MS}	LF	
21CD25	21CD25-TTR9026-045	TTR9026.CC06A	26-34	25	45	TCMT090204
		TTR9030.CC06B	30-38			
21CD32	21CD32-TTR9033-050	TTR9033.CC06A	33-43	32	50	TCMT090204
		TTR9038.CC06B	38-48			
21CD40	21CD40-TTR9042-060	TTR9042.CC09A	42-54	40	60	TCMT110204
		TTR9048.CC09B	48-59			
21CD50	21CD50-TTR9053-060	TTR9053.CC09A	53-70	50	60	TCMT110204
		TTR9061.CC09B	61-78			
21CD63	21CD63-TTR9068-080	TTR9068.CC12A	68-88	63	80	TCMT110204
		TTR9075.CC12B	75-95			
21CD63	21CD63-TTR9084-080	TTR9084.CC12A	84-115	63	80	TCMT16T308
		TTR9100.CC12B	100-131			
21CD80	21CD80-TTR90110-090	TTR9110.CC12A	110-155	80	90	TCMT16T308
		TTR9132.CC12B	132-177			
21CD100	21CD100-TTR90150-115	TTR9150.CC12A	150-205	100	115	TCMT16T308
		TTR9180.CC12B	180-235			

- 镗刀标准配置镗刀头TTR90****A, TTR90****B 镗刀头需单独订购
TTR90****A cartridges are contained, TTR90****B cartridges are sold separately
- 刀片需单独订购
Inserts are sold separately

螺钉 Screw	扳手 Torx wrench	刀体型号 Boring body	螺钉 Screw	扳手 Hex wrench	垫圈 Washer	扳手 Hex wrench
C022A06IP	7IP	21CD25-TR26-045	MS04016N	S3	DT04	S1.5
C022A06IP	7IP	21CD32-TR33-050	MS05016N	S4	DT05	S1.5
C025A07IP	8IP	21CD40-TR42-060	MS06020N	S5	DT06	S2.5
C025A07IP	8IP	21CD50-TR53-060	MS08020N	S6	DT08	S2.5
C035A08IP	15IP	21CD63-TR68-080	MS10025N	S8	DT10	S3
C035A08IP	15IP	21CD63-TR84-080	MS12025N	S10	DT12	S3
C035A08IP	15IP	21CD80-TR110-090	MS10030N	S8	DT10	S3
C035A08IP	15IP	21CD100-TR150-115	MS10030N	S8	DT10	TS3

80°双刃镗刀 (TSR)

80° Double-Edges Boring Tools(TSR)



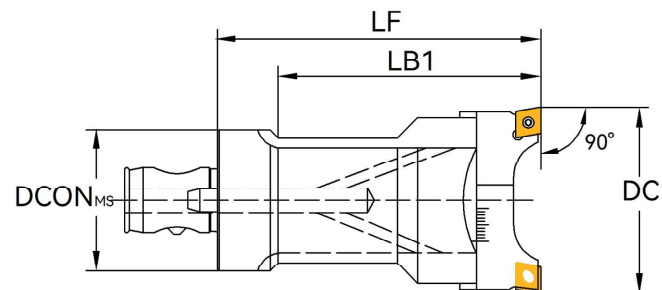
接口类型	型号	镗头型号	镗孔尺寸DC	尺寸		刀片
				Size(mm)		
Interface type	Model	Cartridge	Boring range	DCON _{ms}	LF	Insert
				21CD40	21CD40-TSR8042-60	
21CD50	21CD50-TSR8053-60	TSR8053.SC09	53-70	60	50	SCMT09T308
21CD63	21CD63-TSR8068-80	TSR8068.SC12	68-88	80	63	SCMT120408
21CD63	21CD63-TSR8084-80	TSR8084.SC12	84-115	80	63	SCMT120408
21CD80	21CD80-TSR80110-90	TSR80110.SC12	110-155	90	80	SCMT120408
21CD100	21CD100-TSR80150-115	TSR80150.SC12	150-205	115	100	SCMT120408

● 刀片需单独订购
Inserts are sold separately

螺钉	扳手	刀体型号	螺钉	扳手	垫圈	扳手
Screw	Torx wrench	Boring body	Screw	Hex wrench	Washer	Hex wrench
C035A08IP	15IP	21CD40-TR42-60	MS06020N	S5	DT06	S1.5
C035A08IP	15IP	21CD50-TR53-60	MS08020N	S6	DT08	S2.5
C050A12IP	20IP	21CD63-TR68-80	MS10025N	S8	D10IP	S2.5
C050A12IP	20IP	21CD63-TR84-80	MS12025N	S10	DT12	S3
C050A12IP	20IP	21CD80-TR110-90	MS10030N	S8	D10IP	S3
C050A12IP	20IP	21CD100-TR150-115	MS10030N	S8	D10IP	TS3

90°双刃镗刀 (TTR)

90° Double-Edges Boring Tools(TTR)



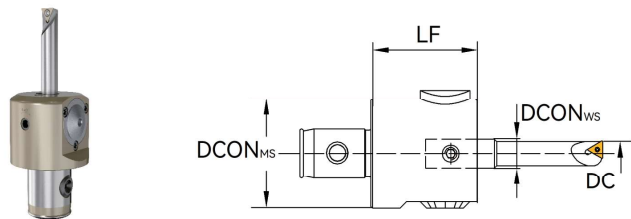
型号 Model	镗孔尺寸DC Boring range	DCON _{MS}	尺寸 Size(mm)		刀片 Insert		
			LF				
			短型 Short style	长型 Long style			
21CD25-TS9025-045	25-32	25	45	-	35	CCMT060204	
21CD32-TS9025-070		32	-	70			58
21CD25-TS9030-050	30-38	25	50	-	-		
21CD32-TS9030-085		32	-	85	73		
21CD32-TS9037-060	37-47	32	60	-	-		
21CD40-TS9046-060	36-56	40	60	-	-		CCMT09T308
21CD50-TS9046-120		50	-	120	104		
21CD40-TS9055-060	55-70	40	60	-	-		
21CD50-TS9055-135		50	-	135	-		
21CD50-TS9069-070	69-84	63	70	-	-		CCMT120408
21CD63-TS9083-080	83-101	63	80	-	-		
21CD63-TS9099-080	99-125	63	80	-	-		
21CD80-TS90123-090	123-150	80	90	-	-		

● 刀片需单独订购
Inserts are sold separately

螺钉 Screw	扳手 Torx wrench	镗头型号 Boring body	螺钉 Screw	扳手 Hex wrench	垫圈 Washer	螺钉 Screw	扳手 Hex wrench
C025A07IP	8IP	TS9025.CC06	MS04016N	S3	DT04	RS03010	S1.5
		TS9030.CC06	MS04016N	S3	DT04	RS03010	S1.5
		TS9037.CC06	MS05016N	S4	DT05	RS03010	S1.5
C035A08IP	15IP	TS9046.CC09	MS05016N	S4	DT05	RS04012	S2
		TS9055.CC09	MS06020N	S5	DT06	RS04012	S2
C050A12IP	20IP	TS9069.CC12	MS08020N	S6	DT08	RS05016	S2.5
		TS9083.CC12	MS10025N	S8	DT10	RS05020	S2.5
		TS9099.CC12	MS10030N	S8	DT10	RS06025	S3
		TS90123.CC12	MS10030N	S8	DT10	RS06025	S3

小孔径精镗刀 (SBZ)

Fine Boring for Small Diameter(SBZ)

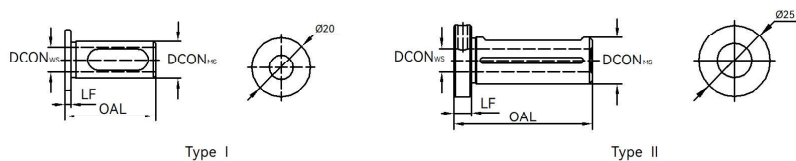


型号 Model	镗孔尺寸DC Boring range	微调行程 Slide travel	尺寸 Size(mm)		
			DCON _{WS}	DCON _{MS}	LF
21CD40-SBZ-8	3-11	2	8	40	35
21CD50-SBZ-12	3-28	3	12	50	40
21CD63-SBZ-16	3-50	5	16	63	60

- 刀柄需单独订购
Toolholders are sold separately
- 变径套、镗刀杆需单独订购
Reducing sleeves & boring bars are sold separately

● 变径套

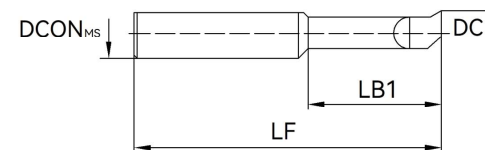
Re Ducing Sleeve



型号 Model	精镗孔器 Boring range	尺寸 Size(mm)				结构型式 DSGN
		DCON _{WS}	DCON _{MS}	LF	OAL	
SBJ-12C8	SBJ-16C8	8	12	2	30	1
SBJ-16C8	21CD63-SBZ-16	8	16	6	48	2

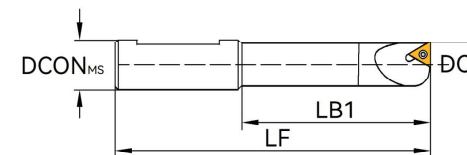
整体硬质合金镗刀杆

Solid Carbide Boring Bar



型号 Model	镗孔尺寸DC Boring range	尺寸 Size(mm)		
		DCON _{MS}	LB1	LF
YBJ-0803-09	3-5	8	9	38
YBJ-0805-15	5-7	8	15	43
YBJ-0807-21	7-9	8	21	49
YBJ-0809-27	9-11	8	27	54

- 该系列镗杆可直接用于21CD40-SBZ-8
These boring bars can be fitted 21CD40-SBZ-8 directly
- 该系列镗杆用于21CD50-SBZ-12时，需与变径套SBJ-12C8配合
These boring bars must use reducing sleeve SBJ-12C8 to fit 21CD50-SBZ-12
- 该系列镗杆用于21CD63-SBZ-16时，需与变径套SBJ-16C8配合
These boring bars must use reducing sleeve SBJ-16C8 to fit 21CD63-SBZ-16

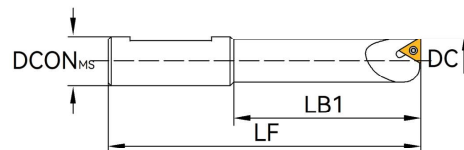


型号 Model	镗孔尺寸DC Boring range	尺寸 Size(mm)			刀片 Insert	螺钉 Screw	扳手 Torx wrench
		DCON _{MS}	LB1	LF			
YSBJ-1608-040	8-11	16	40	82	TBGT060102L	C020S05J	6IP
YSBJ-1610-050	10-13	16	50	92	TBGT060102L	C020S05J	6IP
YSBJ-1612-060	12-17	16	60	102	TPGH090204L	C025A07IP	8IP
YSBJ-1616-080	16-21	16	80	122	TPGH090204L	C025A07IP	8IP
YSBJ-1620-100	20-26	16	100	142	TPGH110304L	C030A07IP	9IP

- 刀片需单独订购
Inserts are sold separately

镗刀杆 - 标准型

Boring Bar-Standard

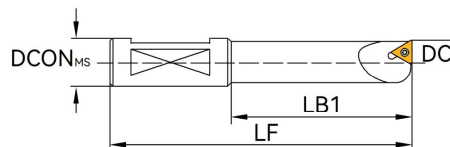


- 刀片需单独订购
Inserts are sold separately

型号 Model	镗孔尺寸DC Boring range	尺寸 Size(mm)			刀片 Insert	螺钉 Screw	扳手 Torx wrench
		DCON _{MS}	LB1	LF			
SBJ-1208-030	8-10	12	32	60	TBGT060102L	C020S05J	6IP
SBJ-1210-040	10-12	12	40	68	TBGT060102L	C020S05J	6IP
SBJ-1212-048	12-14	12	48	76	TPGH090204L	C025A07IP	8IP
SBJ-1214-056	14-16	12	56	84	TPGH090204L	C025A07IP	8IP
SBJ-1216-060	16-18	12	60	88	TPGH090204L	C025A07IP	8IP
SBJ-1218-060	18-20	12	60	88	TPGH110304L	C030A07IP	9IP
SBJ-1220-060	20-24	12	60	88	TPGH110304L	C030A07IP	9IP
SBJ-1224-060	24-28	12	60	88	TPGH110304L	C030A07IP	9IP
SBJ-1608-032	8-11	16	32	74	TBGT060102L	C020S05J	6IP
SBJ-1610-040	10-13	16	40	82	TBGT060102L	C020S05J	6IP
SBJ-1612-053	12-17	16	53	95	TPGH090204L	C025A07IP	8IP
SBJ-1616-068	16-21	16	68	110	TPGH090204L	C025A07IP	8IP
SBJ-1620-083	20-26	16	83	125	TPGH110304L	C030A07IP	9IP
SBJ-1625-090	25-32	16	90	132	TPGH110304L	C030A07IP	9IP
SBJ-1630-090	30-42	16	90	132	TPGH110304L	C030A07IP	9IP
SBJ-1640-090	40-50	16	90	132	TPGH110304L	C030A07IP	9IP

镗刀杆 - 短型

Boring Bar-Short Type

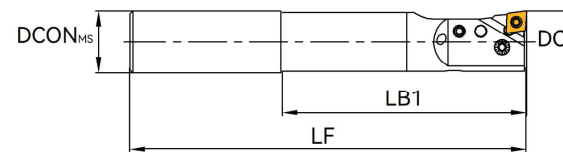


- 刀片需单独订购
Inserts are sold separately

型号 Model	镗孔尺寸DC Boring range	尺寸 Size(mm)			刀片 Insert	螺钉 Screw	扳手 Torx wrench
		DCON _{MS}	LB1	LF			
SBJ-1608-016	8-11	16	16	58	TBGT060102L	C020S05J	6IP
SBJ-1610-020	10-13	16	20	62	TBGT060102L	C020S05J	6IP
SBJ-1612-024	12-17	16	24	66	TPGH090204L	C025A07IP	8IP
SBJ-1616-032	16-21	16	32	74	TPGH090204L	C025A07IP	8IP
SBJ-1620-032	20-26	16	32	74	TPGH110304L	C030A07IP	9IP
SBJ-1625-032	25-32	16	32	74	TPGH110304L	C030A07IP	9IP

微调精镗刀 (CBZ)

Micro-Adjustable Boring Tools(CBZ)

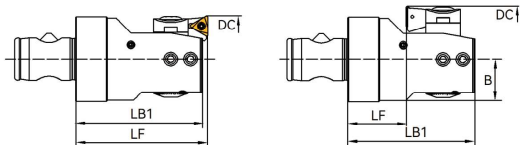


型号 Model	尺寸 Size(mm)				刀片 Insert	螺钉 Screw	扳手 Torx wrench
	DC	DCON _{MS}	LB1	LF			
HC20-CBZ19.0-075	19	20	75	125	CC□□060204	C025A07IP	8IP
HC20-CBZ19.5-075	19.5	20	75	125	CC□□060204	C025A07IP	8IP
HC20-CBZ20.0-080	20	20	80	130	CC□□060204	C025A07IP	8IP
HC20-CBZ20.5-080	20.5	20	80	130	CC□□060204	C025A07IP	8IP
HC20-CBZ21.0-085	21	20	85	135	CC□□060204	C025A07IP	8IP
HC20-CBZ21.5-085	21.5	20	85	135	CC□□060204	C025A07IP	8IP
HC20-CBZ22.0-090	22	20	90	140	CC□□060204	C025A07IP	8IP
HC20-CBZ22.5-090	22.5	20	90	140	CC□□060204	C025A07IP	8IP
HC20-CBZ23.0-090	23	20	90	140	CC□□060204	C025A07IP	8IP
HC20-CBZ23.5-090	23.5	20	90	140	CC□□060204	C025A07IP	8IP
HC20-CBZ24.0-095	24	20	95	145	CC□□060204	C025A07IP	8IP
HC20-CBZ24.5-095	24.5	20	95	145	CC□□060204	C025A07IP	8IP
HC20-CBZ25.0-100	25	20	100	150	CC□□060204	C025A07IP	8IP
HC20-CBZ25.5-100	25.5	20	100	150	CC□□060204	C025A07IP	8IP

- 刀片需单独订购
Inserts are sold separately

微调精镗刀 (FBZ)

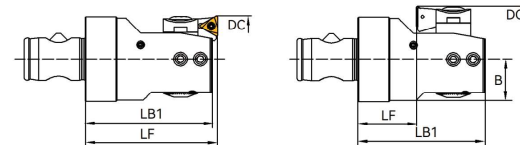
Micro-Adjustable Boring Tools (FBZ)



接口类型 Interface type	型号 Model	正镗 Forward boring			反镗 Back boring				刀片座 Cartridge	螺钉 Screw
		DC	LF	LB1	DC	LF	LB1	B		
21CD25	21CD25-FBZ026008-045	26-47	45	43	36-47	19	43	12.5	BZ02...	SS03005A
21CD32	21CD32-FBZ033010-050	33-60	50	48	44-60	22	48	16	BZ03...	SS04010A
21CD40	21CD40-FBZ042013-060	42-74	60	58	57-74	24	58	20	BZ04...	SS05010A
21CD50	21CD50-FBZ053017-060	53-95	60	58	68-95	20	58	25	BZ05...	SS06012A
21CD63	21CD63-FBZ068032-080	68-152	80	78	84-152	30	78	32.5	BZ06...	SS08012A
21CD80	21CD80-FBZ098053-090	98-203	90	88	98-203	40	88	45	BZ06...	SS08015A

● 刀片座需单独订购
Cartridges are sold separately

● 刀片需单独订购
Inserts are sold separately



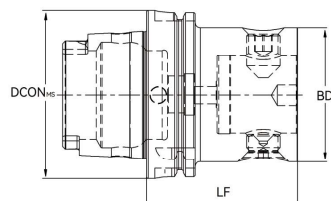
刀片座

Cartridges

型号 Model	正镗 Forward boring	反镗 Back boring	镗刀 Boring Tools	刀片 Insert	螺钉 Torx wrench	扳手 Torx wrench			
BZ021.TP08	26~34	-	21CD25-FBZ026008-45	TP□□0802□□L	C020S05J	6IP			
BZ022.TP08	33~41	36~41	21CD25-FBZ026008-45						
BZ023.TP08	39~47	42~47	21CD25-FBZ026008-45						
BZ031.TP08	33~43	-	21CD32-FBZ033010-50						
BZ032.TP08	42~52	44~52	21CD32-FBZ033010-50						
BZ033.TP08	50~60	52~60	21CD32-FBZ033010-50						
BZ041.TP11	42~55	-	21CD40-FBZ042013-60				TP□□1103□□L	C030A07IP	9IP
BZ042.TP11	52~65	57~65	21CD40-FBZ042013-60						
BZ043.TP11	61~74	66~74	21CD40-FBZ042013-60						
BZ051.TP11	53~70	68~70	21CD50-FBZ053017-60						
BZ052.TP11	64~81	70~81	21CD50-FBZ053017-60						
BZ053.TP11	78~95	84~95	21CD50-FBZ053017-60						
BZ061.TP11	68~100	84~100	21CD63-FBZ068032-80						
	98~151	98~151	21CD80-FBZ098053-90						
BZ062.TP11	95~127	107~127	21CD63-FBZ068032-80						
	125~178	125~178	21CD80-FBZ098053-90						
BZ063.TP11	120~152	132~152	21CD63-FBZ068032-80	CC□□0602	C025A07IP	8IP			
	150~203	150~203	21CD80-FBZ098053-90						
BZ021.CC06	26~34	-	21CD25-FBZ026008-45						
BZ031.CC06	33~43	-	21CD32-FBZ033010-50						
BZ041.TC11	42~55	-	21CD40-FBZ042013-60				TC□□1102	C025A07IP	8IP
BZ051.TC11	53~70	68~70	21CD50-FBZ053017-60						
BZ061.TC11	68~100	84~100	21CD63-FBZ068032-80						
	98~151	98~151	21CD80-FBZ098053-90						

TMG21 手柄模块

TMG21 Base Toolholders



接口类型 Interface type	型号 Model	尺寸 Size(mm)			外锥端螺钉 Thrust screw	内锥端螺钉 Receiving screw
		DCON _{ms}	BD	LF		
HSK-A63	21A.HSK63A.25-050	63	25	50	21A.25-E1	21A.25-E2
HSK-A63	21A.HSK63A.32-055	63	32	55	21A.32-E1	21A.32-E2
HSK-A63	21A.HSK63A.40-060	63	40	60	21A.40-E1	21A.40-E2
HSK-A63	21A.HSK63A.50-070	63	50	70	21A.50-E1	21A.50-E2
HSK-A63	21A.HSK63A.63-080	63	63	80	21A.63-E1	21A.63-E2
HSK-A63	21A.HSK63A.80-100	63	80	100	21A.80-E1	21A.80-E2
HSK-A100	21A.HSK100A.25-060	100	25	60	21A.25-E1	21A.25-E2
HSK-A100	21A.HSK100A.32-060	100	32	60	21A.32-E1	21A.32-E2
HSK-A100	21A.HSK100A.40-080	100	40	80	21A.40-E1	21A.40-E2
HSK-A100	21A.HSK100A.50-080	100	50	80	21A.50-E1	21A.50-E2
HSK-A100	21A.HSK100A.63-080	100	63	80	21A.63-E1	21A.63-E2
HSK-A100	21A.HSK100A.80-090	100	80	90	21A.80-E1	21A.80-E2
HSK-A100	21A.HSK100A.100-100	100	100	100	21A.100-E1	21A.100-E2

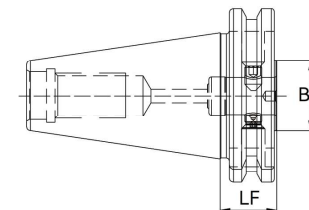
附件 Accessories	BD=25	BD=32	BD=40	BD=50	BD=63	BD=80	BD=100
密封垫 Seal Ring	21A.25-E9	21A.32-E9	21A.40-E9	21A.50-E9	21A.63-E9	21A.80-E9	21A.100-E9
扳手 Hex Wrench	S3	S4	S5	S6	S8	S10	S12

附件 Accessories	DCON _{ms} =63			DCON _{ms} =100		
冷却液套管 CoolUnt tubes	TU-HSK63			TU-HSK100		
扳手 CoolUnt tube Wrench	W-HSK63			W-HSK100		

- 中心通油时，建议配用密封垫
Please use seal ring in the case of internal coolant supply
- 附件需单独订购
Accessories are sold separately

TMG21 手柄模块 - 短型

TMG21 Base Toolholders-Stub



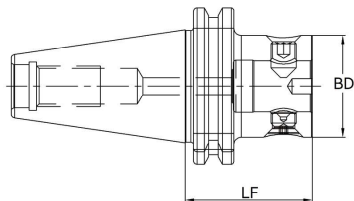
接口类型 Interface type	型号 Model	尺寸 Size(mm)		外锥端螺钉 Thrust screw	内锥端螺钉 Receiving screw
		BD	LF		
JT40	21A.JT40.25-020	25	20	21A.25-E1	21A.25-E2
JT40	21A.JT40.32-022.5	32	22.5	21A.32-E1	21A.32-E2
JT40	21A.JT40.40-022.5	40	22.5	21A.40-E1	21A.40-E2
JT40	21A.JT40.50-045	50	45	21A.50-E1	21A.50-E2
JT40	21A.JT40.63-065	63	65	21A.63-E1	21A.63-E2
JT50	21A.JT50.25-020	25	20	21A.25-E1	21A.25-E2
JT50	21A.JT50.32-022.5	32	22.5	21A.32-E1	21A.32-E2
JT50	21A.JT50.40-022.5	40	22.5	21A.40-E1	21A.40-E2
JT50	21A.JT50.50-045	50	45	21A.50-E1	21A.50-E2
JT50	21A.JT50.63-050	63	50	21A.63-E1	21A.63-E2
JT50	21A.JT50.80-060	80	60	21A.80-E1	21A.80-E2
JT50	21A.JT50.100-080	100	80	21A.100-E1	21A.100-E2

附件 Accessories	BD=25	BD=32	BD=40	BD=50	BD=63	BD=80	BD=100
密封垫 Seal Ring	21A.25-E9	21A.32-E9	21A.40-E9	21A.50-E9	21A.63-E9	21A.80-E9	21A.100-E9
扳手 Hex Wrench	S3	S4	S5	S6	S8	S10	S12

- 中心通油时，建议配用密封垫
Please use seal ring in the case of internal coolant supply
- 附件需单独订购
Accessories are sold separately

TMG21 手柄模块

TMG21 Base Toolholders

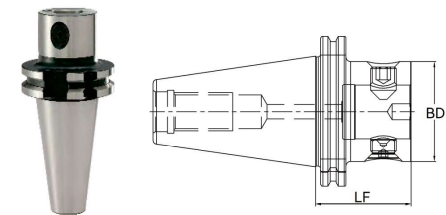


接口类型 Interface type	型号 Model DIN69871-AD	尺寸 Size(mm)		外锥端螺钉 Thrust screw	内锥端螺钉 Receiving screw
		BD	LF		
JT40	21A.JT40.25-050	25	50	21A.25-E1	21A.25-E2
JT40	21A.JT40.25-075	25	75	21A.25-E1	21A.25-E2
JT40	21A.JT40.25-095	25	95	21A.25-E1	21A.25-E2
JT40	21A.JT40.32-050	32	50	21A.32-E1	21A.32-E2
JT40	21A.JT40.32-075	32	75	21A.32-E1	21A.32-E2
JT40	21A.JT40.32-100	32	100	21A.32-E1	21A.32-E2
JT40	21A.JT40.32-135	32	135	21A.32-E1	21A.32-E2
JT40	21A.JT40.40-050	40	50	21A.40-E1	21A.40-E2
JT40	21A.JT40.40-080	40	80	21A.40-E1	21A.40-E2
JT40	21A.JT40.40-110	40	110	21A.40-E1	21A.40-E2
JT40	21A.JT40.40-150	40	150	21A.40-E1	21A.40-E2
JT40	21A.JT40.50-050	50	50	21A.50-E1	21A.50-E2
JT40	21A.JT40.50-080	50	80	21A.50-E1	21A.50-E2
JT40	21A.JT40.50-115	50	115	21A.50-E1	21A.50-E2
JT40	21A.JT40.50-150	50	150	21A.50-E1	21A.50-E2
JT40	21A.JT40.63-090	63	90	21A.63-E1	21A.63-E2
JT40	21A.JT40.63-135	63	135	21A.63-E1	21A.63-E2
JT40	21A.JT40.63-175	63	175	21A.63-E1	21A.63-E2

附件 Accessories	BD=25	BD=32	BD=40	BD=50	BD=63
密封垫 Seal Ring	21A.25-E9	21A.32-E9	21A.40-E9	21A.50-E9	21A.63-E9
扳手 Hex Wrench	S3	S4	S5	S6	S8

● 中心通油时，建议配用密封垫
Please use seal ring in the case of internal coolant supply

● 附件需单独订购
Accessories are sold separately



接口类型 Interface type	型号 Model DIN69871-AD	尺寸 Size(mm)		外锥端螺钉 Thrust screw	内锥端螺钉 Receiving screw
		BD	LF		
JT50	21A.JT50.25-060	25	60	21A.25-E1	21A.25-E2
JT50	21A.JT50.25-090	25	90	21A.25-E1	21A.25-E2
JT50	21A.JT50.25-105	25	105	21A.25-E1	21A.25-E2
JT50	21A.JT50.32-060	32	60	21A.32-E1	21A.32-E2
JT50	21A.JT50.32-090	32	90	21A.32-E1	21A.32-E2
JT50	21A.JT50.32-110	32	110	21A.32-E1	21A.32-E2
JT50	21A.JT50.32-135	32	135	21A.32-E1	21A.32-E2
JT50	21A.JT50.40-060	40	60	21A.40-E1	21A.40-E2
JT50	21A.JT50.40-090	40	90	21A.40-E1	21A.40-E2
JT50	21A.JT50.40-120	40	120	21A.40-E1	21A.40-E2
JT50	21A.JT50.40-150	40	150	21A.40-E1	21A.40-E2
JT50	21A.JT50.50-060	50	60	21A.50-E1	21A.50-E2
JT50	21A.JT50.50-090	50	90	21A.50-E1	21A.50-E2
JT50	21A.JT50.50-125	50	125	21A.50-E1	21A.50-E2
JT50	21A.JT50.50-165	50	165	21A.50-E1	21A.50-E2
JT50	21A.JT50.63-060	63	60	21A.63-E1	21A.63-E2
JT50	21A.JT50.63-105	63	105	21A.63-E1	21A.63-E2
JT50	21A.JT50.63-145	63	145	21A.63-E1	21A.63-E2
JT50	21A.JT50.63-175	63	175	21A.63-E1	21A.63-E2
JT50	21A.JT50.63-225	63	225	21A.63-E1	21A.63-E2
JT50	21A.JT50.80-070	80	70	21A.80-E1	21A.80-E2
JT50	21A.JT50.80-125	80	125	21A.80-E1	21A.80-E2
JT50	21A.JT50.80-155	80	155	21A.80-E1	21A.80-E2
JT50	21A.JT50.80-200	80	200	21A.80-E1	21A.80-E2
JT50	21A.JT50.80-250	80	250	21A.80-E1	21A.80-E2
JT50	21A.JT50.100-115	100	115	21A.100-E1	21A.100-E2
JT50	21A.JT50.100-155	100	155	21A.100-E1	21A.100-E2
JT50	21A.JT50.100-200	100	200	21A.100-E1	21A.100-E2
JT50	21A.JT50.100-250	100	250	21A.100-E1	21A.100-E2

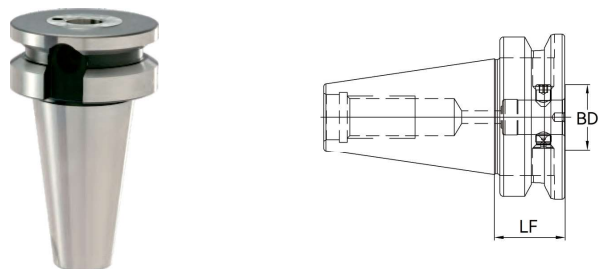
附件 Accessories	BD=25	BD=32	BD=40	BD=50	BD=63	BD=80	BD=100
密封垫 Seal Ring	21A.25-E9	21A.32-E9	21A.40-E9	21A.50-E9	21A.63-E9	21A.80-E9	21A.100-E9
扳手 Hex Wrench	S3	S4	S5	S6	S8	S10	S12

● 中心通油时，建议配用密封垫
Please use seal ring in the case of internal coolant supply

● 附件需单独订购
Accessories are sold separately

TMG21 手柄模块 - 短型

TMG21 Base Toolholders-Stub



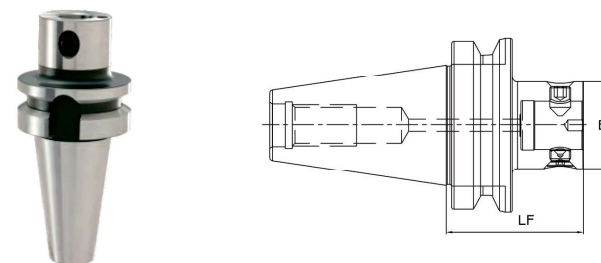
接口类型	型号	尺寸		外锥端螺钉	内锥端螺钉
Interface type	Model	Size(mm)		Thrust screw	Receiving screw
	DIN69871-AD	BD	LF		
BT40	21A.BT40.25-027	25	27	21A.25-E1	21A.25-E2
BT40	21A.BT40.32-027.5	32	27.5	21A.32-E1	21A.32-E2
BT40	21A.BT40.40-027.5	40	27.5	21A.40-E1	21A.40-E2
BT40	21A.BT40.50-050.5	50	50.5	21A.50-E1	21A.50-E2
BT40	21A.BT40.63-055	63	55	21A.63-E1	21A.63-E2
BT50	21A.BT50.32-038.5	32	38.5	21A.25-E1	21A.32-E2
BT50	21A.BT50.40-038.5	40	38.5	21A.32-E1	21A.40-E2
BT50	21A.BT50.50-038.5	50	38.5	21A.40-E1	21A.50-E2
BT50	21A.BT50.63-038.5	63	38.5	21A.50-E1	21A.63-E2
BT50	21A.BT50.80-075	80	75	21A.63-E1	21A.80-E2
BT50	21A.BT50.100-090	100	90	21A.80-E1	21A.100-E2

附件 Accessories	BD=25	BD=32	BD=40	BD=50	BD=63	BD=80	BD=100
密封垫 Seal Ring	21A.25-E9	21A.32-E9	21A.40-E9	21A.50-E9	21A.63-E9	21A.80-E9	21A.100-E9
扳手 Hex Wrench	S3	S4	S5	S6	S8	S10	S12

- 中心通油时，建议配用密封垫
Please use seal ring in the case of internal coolant supply
- 附件需单独订购
Accessories are sold separately

TMG21 手柄模块

TMG21 Base Toolholders



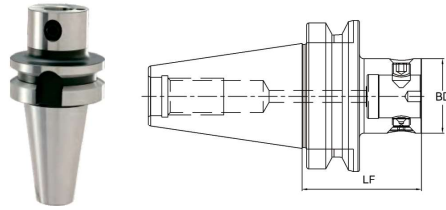
接口类型	型号	尺寸		外锥端螺钉	内锥端螺钉
		Size(mm)			
Interface type	Model	BD	LF	Thrust screw	Receiving screw
	DIN69871-AD				
BT30	21A.BT30.25-040	25	40	21A.25-E1	21A.25-E2
BT30	21A.BT30.32-050	32	50	21A.32-E1	21A.32-E2
BT30	21A.BT30.40-050	40	50	21A.40-E1	21A.40-E2
BT40	21A.BT40.25-058	25	58	21A.25-E1	21A.25-E2
BT40	21A.BT40.25-075	25	75	21A.25-E1	21A.25-E2
BT40	21A.BT40.25-100	25	100	21A.25-E1	21A.25-E2
BT40	21A.BT40.32-058	32	58	21A.32-E1	21A.32-E2
BT40	21A.BT40.32-085	32	85	21A.32-E1	21A.32-E2
BT40	21A.BT40.32-110	32	110	21A.32-E1	21A.32-E2
BT40	21A.BT40.32-145	32	145	21A.32-E1	21A.32-E2
BT40	21A.BT40.40-058	40	58	21A.40-E1	21A.40-E2
BT40	21A.BT40.40-090	40	90	21A.40-E1	21A.40-E2
BT40	21A.BT40.40-120	40	120	21A.40-E1	21A.40-E2
BT40	21A.BT40.40-150	40	150	21A.40-E1	21A.40-E2
BT40	21A.BT40.50-058	50	58	21A.50-E1	21A.50-E2
BT40	21A.BT40.50-095	50	95	21A.50-E1	21A.50-E2
BT40	21A.BT40.50-125	50	125	21A.50-E1	21A.50-E2
BT40	21A.BT40.50-165	50	165	21A.50-E1	21A.50-E2
BT40	21A.BT40.63-070	63	70	21A.63-E1	21A.63-E2
BT40	21A.BT40.63-098	63	98	21A.63-E1	21A.63-E2
BT40	21A.BT40.63-135	63	135	21A.63-E1	21A.63-E2
BT40	21A.BT40.63-180	63	180	21A.63-E1	21A.63-E2

附件 Accessories	BD=25	BD=32	BD=40	BD=50	BD=63
密封垫 Seal Ring	21A.25-E9	21A.32-E9	21A.40-E9	21A.50-E9	21A.63-E9
扳手 Hex Wrench	S3	S4	S5	S6	S8

- 中心通油时，建议配用密封垫
Please use seal ring in the case of internal coolant supply
- 附件需单独订购
Accessories are sold separately

TMG21 手柄模块

TMG21 Base Toolholders

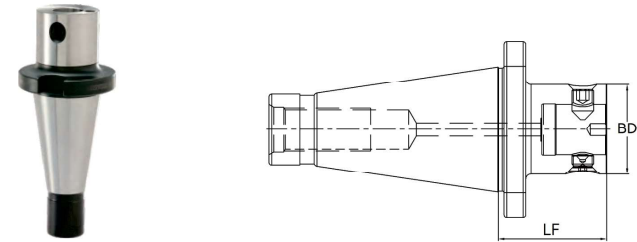


接口类型 Interface type	型号 Model	尺寸 Size(mm)		外锥端螺钉 Thrust screw	内锥端螺钉 Receiving screw
		BD	LF		
BT50	21A.BT50.25-079	25	79	21A.25-E1	21A.25-E2
BT50	21A.BT50.25-100	25	100	21A.25-E1	21A.25-E2
BT50	21A.BT50.25-125	25	125	21A.25-E1	21A.25-E2
BT50	21A.BT50.32-079	32	79	21A.32-E1	21A.32-E2
BT50	21A.BT50.32-105	32	105	21A.32-E1	21A.32-E2
BT50	21A.BT50.32-130	32	130	21A.32-E1	21A.32-E2
BT50	21A.BT50.32-165	32	165	21A.32-E1	21A.32-E2
BT50	21A.BT50.40-079	40	79	21A.40-E1	21A.40-E2
BT50	21A.BT50.40-105	40	105	21A.40-E1	21A.40-E2
BT50	21A.BT50.40-140	40	140	21A.40-E1	21A.40-E2
BT50	21A.BT50.40-175	40	175	21A.40-E1	21A.40-E2
BT50	21A.BT50.50-079	50	79	21A.50-E1	21A.50-E2
BT50	21A.BT50.50-110	50	110	21A.50-E1	21A.50-E2
BT50	21A.BT50.50-145	50	145	21A.50-E1	21A.50-E2
BT50	21A.BT50.50-180	50	180	21A.50-E1	21A.50-E2
BT50	21A.BT50.63-079	63	79	21A.63-E1	21A.63-E2
BT50	21A.BT50.63-125	63	125	21A.63-E1	21A.63-E2
BT50	21A.BT50.63-165	63	165	21A.63-E1	21A.63-E2
BT50	21A.BT50.63-200	63	200	21A.63-E1	21A.63-E2
BT50	21A.BT50.63-250	63	250	21A.63-E1	21A.63-E2
BT50	21A.BT50.80-089	80	89	21A.80-E1	21A.80-E2
BT50	21A.BT50.80-135	80	135	21A.80-E1	21A.80-E2
BT50	21A.BT50.80-150	80	150	21A.80-E1	21A.80-E2
BT50	21A.BT50.80-175	80	175	21A.80-E1	21A.80-E2
BT50	21A.BT50.80-210	80	210	21A.80-E1	21A.80-E2
BT50	21A.BT50.80-265	80	265	21A.80-E1	21A.80-E2
BT50	21A.BT50.100-134	100	134	21A.100-E1	21A.100-E2
BT50	21A.BT50.100-165	100	165	21A.100-E1	21A.100-E2
BT50	21A.BT50.100-200	100	200	21A.100-E1	21A.100-E2
BT50	21A.BT50.100-250	100	250	21A.100-E1	21A.100-E2

附件 Accessories	BD=25	BD=32	BD=40	BD=50	BD=63	BD=80	BD=100
密封垫 Seal Ring	21A.25-E9	21A.32-E9	21A.40-E9	21A.50-E9	21A.63-E9	21A.80-E9	21A.100-E9
扳手 Hex Wrench	S3	S4	S5	S6	S8	S10	S12

- 中心通油时，建议配用密封垫
Please use seal ring in the case of internal coolant supply

- 附件需单独订购
Accessories are sold separately



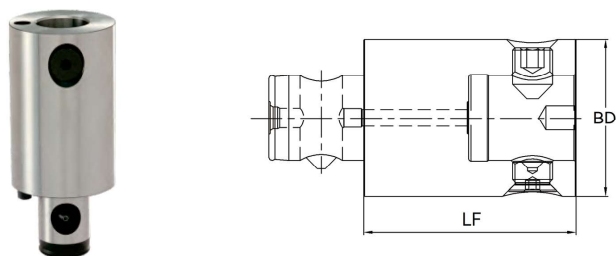
接口类型 Interface type	型号 Model	尺寸 Size(mm)		外锥端螺钉 Thrust screw	内锥端螺钉 Receiving screw
		BD	LF		
ST50	21A.ST50.50-060	50	60	21A.50-E1	21A.50-E2
ST51	21A.ST50.63-060	63	60	21A.63-E1	21A.63-E2
ST52	21A.ST50.80-070	80	70	21A.80-E1	21A.80-E2
ST53	21A.ST50.100-115	100	115	21A.100-E1	21A.100-E2

附件 Accessories	BD=50	BD=63	BD=80	BD=100
密封垫 Seal Ring	21A.50-E9	21A.63-E9	21A.80-E9	21A.100-E9
扳手 Hex Wrench	S6	S8	S10	S12

- 中心通油时，建议配用密封垫
Please use seal ring in the case of internal coolant supply
- 附件需单独订购
Accessories are sold separately

TMG21 等径中间模块

TMG21 Extensions



型号 Model	尺寸 Size(mm)		外锥端螺钉 Thrust screw	内锥端螺钉 Receiving screw	滑销 Floating pin	定位销 Orientation pin
	BD	LF				
21B.25/25-045	25	45	21A.25-E1	21A.25-E2	21A.25-E3	21A.25-E4
21B.25/25-060	25	60	21A.25-E1	21A.25-E2	21A.25-E3	21A.25-E4
21B.32/32-050	32	50	21A.32-E1	21A.32-E2	21A.32-E3	21A.32-E4
21B.32/32-070	32	70	21A.32-E1	21A.32-E2	21A.32-E3	21A.32-E4
21B.40/40-060	40	60	21A.40-E1	21A.40-E2	21A.40-E3	21A.40-E4
21B.40/40-090	40	90	21A.40-E1	21A.40-E2	21A.40-E3	21A.40-E4
21B.50/50-065	50	65	21A.50-E1	21A.50-E2	21A.50-E3	21A.50-E4
21B.50/50-100	50	100	21A.50-E1	21A.50-E2	21A.50-E3	21A.50-E4
21B.63/63-085	63	85	21A.63-E1	21A.63-E2	21A.63-E3	21A.63-E4
21B.63/63-125	63	125	21A.63-E1	21A.63-E2	21A.63-E3	21A.63-E4
21B.80/80-085	80	85	21A.80-E1	21A.80-E2	21A.80-E3	21A.80-E4
21B.80/80-125	80	125	21A.80-E1	21A.80-E2	21A.80-E3	21A.80-E4
21B.100/100-085	100	85	21A.100-E1	21A.100-E2	21A.100-E3	21A.100-E4
21B.100/100-125	100	125	21A.100-E1	21A.100-E2	21A.100-E3	21A.100-E4
21B.100/100-160	100	160	21A.100-E1	21A.100-E2	21A.100-E3	21A.100-E4

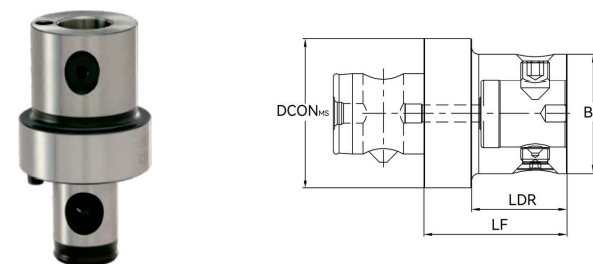
附件 Accessories	BD=25	BD=32	BD=40	BD=50	BD=63	BD=80	BD=100
密封垫 Seal Ring	21A.25-E9	21A.32-E9	21A.40-E9	21A.50-E9	21A.63-E9	21A.80-E9	21A.100-E9
扳手 Hex Wrench	S3	S4	S5	S6	S8	S10	S12

- 中心通油时，建议配用密封垫
Please use seal ring in the case of internal coolant supply

- 附件需单独订购
Accessories are sold separately

TMG21 变径中间模块

TMG21 Reductions



型号 Model	尺寸 Size(mm)				外锥端螺钉 Thrust screw	内锥端螺钉 Receiving screw	滑销 Floating pin	定位销 Orientation pin
	DCON _{HS}	BD	LF	LDR				
21B.32/25-040	32	25	40	28	21A.25-E1	21A.25-E2	21A.32-E3	21A.32-E4
21B.40/25-040	40	25	40	26	21A.25-E1	21A.25-E2	21A.40-E3	21A.40-E4
21B.40/32-040	40	32	40	26	21A.32-E1	21A.32-E2	21A.40-E3	21A.40-E4
21B.50/25-050	50	25	50	34	21A.25-E1	21A.25-E2	21A.50-E3	21A.50-E4
21B.50/32-050	50	32	50	34	21A.32-E1	21A.32-E2	21A.50-E3	21A.50-E4
21B.50/40-050	50	40	50	34	21A.40-E1	21A.40-E2	21A.50-E3	21A.50-E4
21B.63/25-060	63	25	60	40	21A.25-E1	21A.25-E2	21A.63-E3	21A.63-E4
21B.63/32-060	63	32	60	40	21A.32-E1	21A.32-E2	21A.63-E3	21A.63-E4
21B.63/40-060	63	40	60	40	21A.40-E1	21A.40-E2	21A.63-E3	21A.63-E4
21B.63/50-060	63	50	60	40	21A.50-E1	21A.50-E2	21A.63-E3	21A.63-E4
21B.80/32-060	80	32	60	36	21A.32-E1	21A.32-E2	21A.80-E3	21A.80-E4
21B.80/40-060	80	40	60	36	21A.40-E1	21A.40-E2	21A.80-E3	21A.80-E4
21B.80/50-060	80	50	60	36	21A.50-E1	21A.50-E2	21A.80-E3	21A.80-E4
21B.80/63-060	80	63	60	36	21A.63-E1	21A.63-E2	21A.80-E3	21A.80-E4
21B.100/40-080	100	40	80	52	21A.40-E1	21A.40-E2	21A.100-E3	21A.100-E4
21B.100/50-080	100	50	80	52	21A.50-E1	21A.50-E2	21A.100-E3	21A.100-E4
21B.100/63-080	100	63	80	52	21A.63-E1	21A.63-E2	21A.100-E3	21A.100-E4
21B.100/80-080	100	80	80	52	21A.80-E1	21A.80-E2	21A.100-E3	21A.100-E4

附件 Accessories	BD=25	BD=32	BD=40	BD=50	BD=63	BD=80
密封垫 Seal Ring	21A.25-E9	21A.32-E9	21A.40-E9	21A.50-E9	21A.63-E9	21A.80-E9
扳手 Hex Wrench	S3	S4	S5	S6	S8	S10

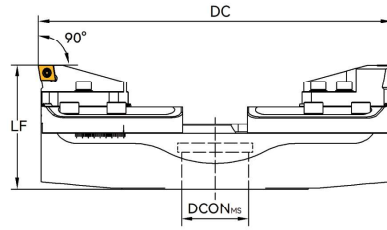
- 中心通油时，建议配用密封垫
Please use seal ring in the case of internal coolant supply

- 附件需单独订购
Accessories are sold separately

大直径双刃镗刀 (SCC)

Double-Edges Boring Tools(SCC)

- 使用正前角刀片 (刀片后角大于 0°)。
Use positive inserts
- 简单可靠的刀片夹紧方式和极少的备件。
Reliable fix insert clamping
- 适用于轻、中型加工场合。
Light to medium cutting



镗孔尺寸DC	组合型号	尺寸		刀柄	桥体	镗刀座	内冷却	刀片
		Size(mm)						
Boring range	Model	DCON _{HS}	LF	Tool Holders	Crossbars	Slide insert holder	Inner Cooling	Insert
150~200	9IP0.RS150.CC12.40	40	95	..XMX40..	CRB150	SCC12.TS90	Y	CC□□1204□□
200~250	9IP0.RS200.CC12.40	40	95		CRB200		Y	
250~300	9IP0.RS250.CC12.40	40	95		CRB250		Y	
300~380	9IP0.RS300.CC12.60	60	105	..XMX60..	CRB300		-	
380~460	9IP0.RS380.CC12.60	60	105		CRB380		-	
460~540	9IP0.RS460.CC12.60	60	115		CRB460		-	
540~620	9IP0.RS540.CC12.60	60	115		CRB540		-	
620~700	9IP0.RS620.CC12.60	60	115		CRB620		-	

- 刀片需单独订购
Inserts are sold separately
- 刀柄需单独订购
Toolholders are sold separately
- 交货时, 桥体与镗刀座分开包装
Crossbar and slide insert holders are packed separately

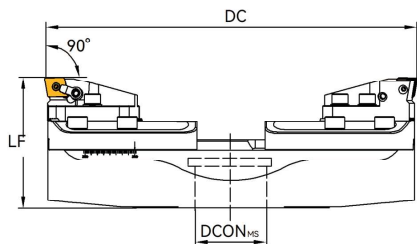
桥体	型号	滑座	螺钉	垫圈	扳手	微调组件	扳手
Crossbars	Model	Slide base	Screw	Washer	Hex Wrench	Adjustable member	Hex Wrench
	CRB150	SDB50	MS10030	DT10	S8	ADJM05	TS2.5
	CRB200						
	CRB250						
	CRB300	SDB80					
	CRB380						
	CRB460						
	CRB540						
	CRB620						

镗刀座	型号	螺钉	垫圈	扳手	螺钉	扳手
Slide insert holder	Model	Screw	Washer	Hex Wrench	Screw	Hex Wrench
	SCC12.TS90	MS08020	DT08	S6	C050A12IP	20IPIP

大直径双刃镗刀 (MCN)

Double-Edges Boring Tools(MCN)

- 采用销钉侧压与压板上压。
Rigid clamping
- 使用 N 后角刀片 (刀片后角为 0°),
刀片可双面使用。
Use negative inserts



镗孔尺寸DC	组合型号	尺寸		刀柄	桥体	镗刀座	内冷却	刀片
		Size(mm)						
Boring range	Model	DCON _{MS}	LF	Tool Holders	Crossbars	Slide insert holder	Inner Cooling	Insert
150~200	9IP0.RM150.CN16.40	40	95	..XMX40..	CRB150	SCC12.TS90	Y	CC□□1606□□
200~250	9IP0.RM200.CN16.40	40	95		CRB200		Y	
250~300	9IP0.RM250.CN16.40	40	95		CRB250		Y	
300~380	9IP0.RM300.CN16.60	60	105	..XMX60..	CRB300		-	
380~460	9IP0.RM380.CN16.60	60	105		CRB380		-	
460~540	9IP0.RM460.CN16.60	60	115		CRB460		-	
540~620	9IP0.RM540.CN16.60	60	115		CRB540		-	
620~700	9IP0.RM620.CN16.60	60	115	CRB620	-			

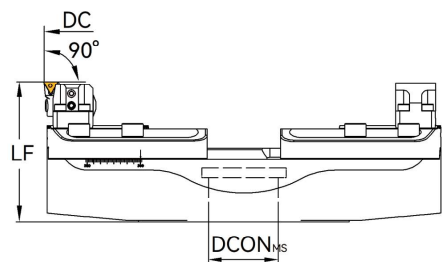
- 刀片需单独订购
Inserts are sold separately
- 刀柄需单独订购
Toolholders are sold separately
- 交货时, 桥体与镗刀座分开包装
Crossbar and slide insert holders are packed separately

桥体	型号	滑座	螺钉	垫圈	扳手	微调组件	扳手
Crossbars	Model	Slide base	Screw	Washer	Hex Wrench	Adjustable member	Hex Wrench
	CRB150	SDB50	MS10030	DT10	S8	ADJM05	TS2.5
	CRB200						
	CRB250						
	CRB300	SDB80					
	CRB380						
	CRB460						
	CRB540						
	CRB620						

镗刀座	型号	螺钉	垫圈	扳手	螺钉	扳手
Slide insert holder	Model	Screw	Washer	Hex Wrench	Screw	Hex Wrench
	SCC12.TS90	MS08020	DT08	S6	C050A12IP	20IP

大直径微调精镗刀

Fine Boring Tools for Large Diameter



镗孔尺寸DC	组合型号	尺寸		刀柄	桥体	镗刀座	内冷却	刀片
		Size(mm)						
Boring range	Model	DCON _{ms}	LF	Tool Holders	Crossbars	Slide insert holder	Inner Cooling	Insert
150~200	91P0.FS150.TC11.40	40	95	..XMX40..	CRB150	FTC11.TS90	Y	TC..1102..
200~250	91P0.FS200.TC11.40	40	95		CRB200		Y	
250~300	91P0.FS250.TC11.40	40	95		CRB250		Y	
300~380	91P0.FS300.TC11.60	60	105	CRB300	-			
380~460	91P0.FS380.TC11.60	60	105	CRB380	-			
460~540	91P0.FS460.TC11.60	60	115	CRB460	-			
540~620	91P0.FS540.TC11.60	60	115	..XMX60..	CRB540	-		
620~700	91P0.FS620.TC11.60	60	115		CRB620	-		

● 刀片需单独订购
Inserts are sold separately

● 刀柄需单独订购
Toolholders are sold separately

● 交货时，桥体与镗刀座分开包装
Crossbar and slide insert holders are packed separately

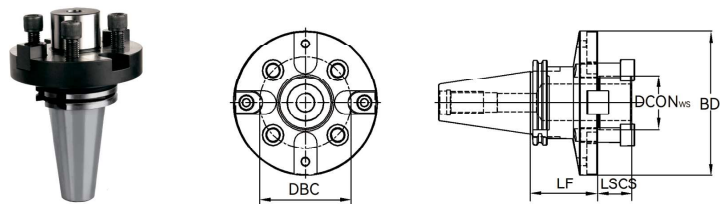
桥体	型号	滑座	螺钉	垫圈	扳手
Crossbars	Model	Slide base	Screw	Washer	Hex Wrench
	CRB150	SDB50	MS10030	DT10	S8
	CRB200				
	CRB250				
	CRB300	SDB80			
	CRB380				
	CRB460				
	CRB540				
	CRB620				

镗刀座	型号	配重块	螺钉	扳手
Slide insert holder	Model	Balance	Screw	Hex Wrench
	FTC11.TS90	ZB041	MS05020	S4

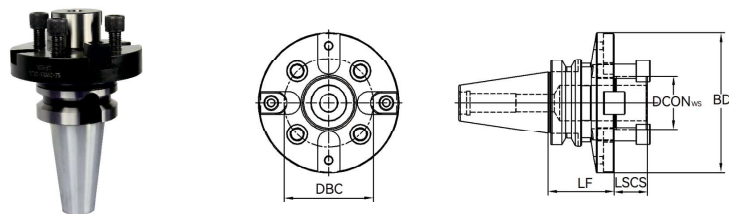
刀片座	型号	螺钉	扳手	螺钉	□□
Cartridges	Model	Screw	Hex Wrench	Screw	Hex Wrench
	BZ041.TC11	SS05010A	S3	C025A071P	8PIIP

大直径镗刀专用刀柄

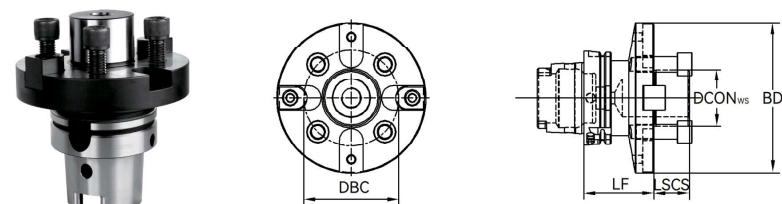
Toolholders for Large Diameter Boring



接口类型 Interface type	型号 Model	尺寸 Size(mm)					螺钉 screw	键 Key	螺钉 screw
		DCON _{ws}	BD	DBC	LF	LSCS			
JT40	JT40-XXM40-060	40	89	66.7	60	27	MS12045(4)	KXM40	MS08020
JT50	JT50-XXM40-075	40	89	66.7	75	27	MS12045(4)	KXM40	MS08020
JT50	JT50-XXM60-075	60	160	101.6	75	38	MS16045(4)	KXMC60	MS10025



接口类型 Interface type	型号 Model	尺寸 Size(mm)					螺钉 screw	键 Key	螺钉 screw
		DCON _{ws}	BD	DBC	LF	LSCS			
BT40	BT40-XXM40-060	40	89	66.7	60	27	MS12045(4)	KXM40	MS08020
BT50	BT50-XXM40-075	40	89	66.7	75	27	MS12045(4)	KXM40	MS08020
BT50	BT50-XXM40-150	40	89	66.7	150	27	MS12045(4)	KXM40	MS08020
BT50	BT50-XXM40-200	40	89	66.7	200	27	MS12045(4)	KXM40	MS08020
BT50	BT50-XXM40-250	40	89	66.7	250	27	MS12045(4)	KXM40	MS08020
BT50	BT50-XXM60-075	60	160	101.6	75	38	MS16045(4)	KXMC60	MS10025
BT50	BT50-XXM60-150	60	160	101.6	150	38	MS16045(4)	KXMC60	MS10025
BT50	BT50-XXM60-200	60	160	101.6	200	38	MS16045(4)	KXMC60	MS10025



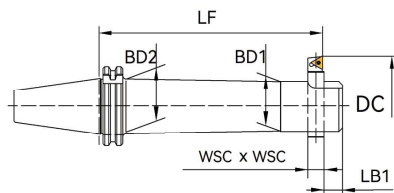
接口类型 Interface type	型号 Model	尺寸 Size(mm)					螺钉 screw	键 Key	螺钉 screw
		DCON _{ws}	BD	DBC	LF	LSCS			
HSK63A	HSK63A-XXM40-065	40	89	66.7	60	27	MS12045(4)	KXM40	MS08020
HSK100A	HSK100A-XXM40-075	40	89	66.7	75	27	MS12045(4)	KXM40	MS08020
HSK100A	HSK100A-XXM60-075	60	160	101.6	75	38	MS16045(4)	KXMC60	MS10025

- 附件需要单独订购
Accessories are sold separately

附件 Accessories	DCON _{ws} =40	DCON _{ws} =60
扳手 Hex Wrench	S10	S14

JT 直角型粗镗刀 (TZC)

JT Straight Form Rough Boring Tools(TZC)

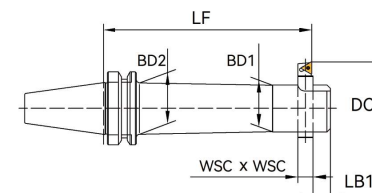


接口类型 Interface type	型号 Model	镗孔尺寸 DC Boring range	尺寸 Size(mm)					螺钉 Screw	扳手 Hex wrench
			LF	BD ₁	BD ₂	LB ₁	WSC×WSC		
JT40	JT40-TZC25-135	25-50	135	20	24	10	8	RS04005	S2
JT40	JT40-TZC38-180	38-70	180	30	36	15	10	RS06008	S3
JT40	JT40-TZC50-180	50-90	180	40	44	15	13	RS08012	S4
JT40	JT40-TZC50-225	50-90	225	40	44	15	13	RS08012	S4
JT40	JT40-TZC62-180	62-115	180	50	50	15	16	RS10012	S5
JT40	JT40-TZC62-225	62-115	225	50	50	15	16	RS10012	S5
JT40	JT40-TZC72-180	72-135	180	50	50	15	19	RS12016	S6
JT40	JT40-TZC72-225	72-135	225	50	50	15	19	RS12016	S6
JT40	JT40-TZC90-180	90-150	180	50	50	15	19	RS12016	S6
JT40	JT40-TZC90-225	90-150	225	50	50	15	19	RS12016	S6
JT50	JT50-TZC25-135	25-50	135	20	24	10	8	RS04005	S2
JT50	JT50-TZC38-180	38-70	180	30	36	15	10	RS06008	S3
JT50	JT50-TZC50-180	50-90	180	40	48	15	13	RS08012	S4
JT50	JT50-TZC50-240	50-90	240	40	48	15	13	RS08012	S4
JT50	JT50-TZC62-195	62-115	195	50	56	15	16	RS10012	S5
JT50	JT50-TZC62-270	62-115	270	50	56	15	16	RS10012	S5
JT50	JT50-TZC72-195	72-135	195	60	66	15	19	RS12016	S6
JT50	JT50-TZC72-285	72-135	285	60	66	15	19	RS12016	S6
JT50	JT50-TZC90-210	90-150	210	72	77	18	19	RS12016	S6
JT50	JT50-TZC90-300	90-150	300	72	77	18	19	RS12016	S6
JT50	JT50-TZC105-195	105-190	195	80	80	20	25	RS16016	S8
JT50	JT50-TZC105-285	105-190	285	80	80	20	25	RS16016	S8

- 镗刀头单独订购，根据加工要求接口 WSC×WSC 选配相应的镗刀头
Please order cartridges separately according to size of WSC×WSC

BT 直角型粗镗刀 (TZC)

BT Straight Form Rough Boring Tools(TZC)

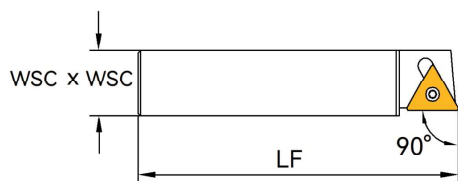


接口类型 Interface type	型号 Model	镗孔尺寸 DC Boring range	尺寸 Size(mm)					螺钉 Screw	扳手 Hex wrench
			LF	BD ₁	BD ₂	LB ₁	WSC×WSC		
BT40	BT40-TZC25-135	25-50	135	20	24	10	8	RS04005	S2
BT40	BT40-TZC38-180	38-70	180	30	36	15	10	RS06008	S3
BT40	BT40-TZC50-180	50-90	180	40	44	15	13	RS08012	S4
BT40	BT40-TZC50-225	50-90	225	40	44	15	13	RS08012	S4
BT40	BT40-TZC62-180	62-115	180	50	56	15	16	RS10012	S5
BT40	BT40-TZC62-225	62-115	225	50	56	15	16	RS10012	S5
BT40	BT40-TZC72-180	72-135	180	50	50	15	19	RS12016	S6
BT40	BT40-TZC72-225	72-135	225	50	50	15	19	RS12016	S6
BT40	BT40-TZC90-180	90-150	180	50	50	15	19	RS12016	S6
BT40	BT40-TZC90-225	90-150	225	50	50	15	19	RS12016	S6
BT50	BT50-TZC25-135	25-50	135	20	24	10	8	RS04005	S2
BT50	BT50-TZC38-180	38-70	180	30	36	15	10	RS06008	S3
BT50	BT50-TZC50-180	50-90	180	40	48	15	13	RS08012	S4
BT50	BT50-TZC50-240	50-90	240	40	48	15	13	RS08012	S4
BT50	BT50-TZC62-195	62-115	195	50	56	15	16	RS10012	S5
BT50	BT50-TZC62-270	62-115	270	50	56	15	16	RS10012	S5
BT50	BT50-TZC72-195	72-135	195	60	66	15	19	RS12016	S6
BT50	BT50-TZC72-285	72-135	285	60	66	15	19	RS12016	S6
BT50	BT50-TZC90-210	90-150	210	72	77	18	19	RS12016	S6
BT50	BT50-TZC90-300	90-150	300	72	77	18	19	RS12016	S6
BT50	BT50-TZC105-195	105-190	195	80	80	20	25	RS16016	S8
BT50	BT50-TZC105-285	105-190	285	80	80	20	25	RS16016	S8

- 镗刀头单独订购，根据加工要求接口 WSC×WSC 选配相应的镗刀头
Please order cartridges separately according to size of WSC×WSC

TZC 镗刀头

TZC Cartridges

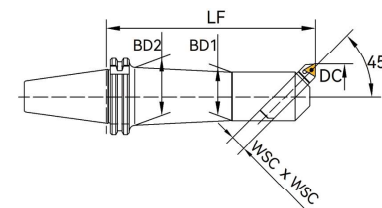


型号 Model	镗孔尺寸 DC Boring range	尺寸 Size(mm)		刀片 Insert	螺钉 Screw	扳手 Hex wrench
		LF	WSC×WSC			
TZC08-023-90L	25-38	23	8	CP□□050204	L60M2.2×5	6IP
TZC08-036-90L	38-50	36	8	CP□□050204	L60M2.2×5	6IP
TZC10-036-90L	38-50	36	10	TC□□090204	L60M2.2×5	6IP
TZC10-048-90L	50-70	48	10	TC□□090204	L60M2.2×5	6IP
TZC13-048-90L	50-70	48	13	TC□□110204	L60M2.5×5.2	8IP
TZC13-065-90L	70-90	65	13	TC□□110204	L60M2.5×5.2	8IP
TZC16-060-90L	62-90	60	16	TC□□110204	L60M2.5×5.2	8IP
TZC16-085-90L	90-115	85	16	TC□□110204	L60M2.5×5.2	8IP
TZC19-070-90L	72-105	70	19	TC□□16T308	L60M3.5×8.8	15IP
TZC19-095-90L	105-135	95	19	TC□□16T308	L60M3.5×8.8	15IP
TZC19-120-90L	135-150	120	19	TC□□16T308	L60M3.5×8.8	15IP
TZC25-100-90L	105-140	100	25	TC□□16T308	L60M3.5×8.8	15IP
TZC25-135-90L	140-190	135	25	TC□□16T308	L60M3.5×8.8	15IP

- 刀片需单独订购
Inserts are sold separately

倾斜型粗镗刀 (TQC)

Clino-form Rough Boring Tools(TQC)

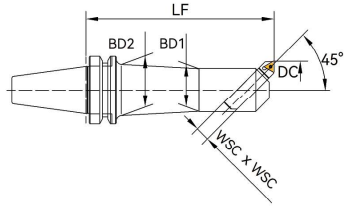


接口类型 Interface type	型号 Model	镗孔尺寸 DC Boring range	尺寸 Size(mm)				螺钉 Screw	扳手 Hex wrench
			LF	BD ₁	BD ₂	WSC×WSC		
JT40	JT40-TQC25-135	25-38	135	20	24	8	RS04005	S2
JT40	JT40-TQC30-165	30-42	165	24	28	8	RS05006	S2.5
JT40	JT40-TQC38-180	38-52	180	30	36	10	RS06008	S3
JT40	JT40-TQC42-210	42-56	210	34	40	10	RS06008	S3
JT40	JT40-TQC50-180	50-65	180	40	48	13	RS08012	S4
JT40	JT40-TQC50-225	50-65	225	40	48	13	RS08012	S4
JT40	JT40-TQC62-180	62-90	180	50	50	16	RS10012	S5
JT40	JT40-TQC62-240	62-90	240	50	50	16	RS10012	S5
JT40	JT40-TQC72-180	72-110	180	50	50	19	RS12016	S6
JT40	JT40-TQC72-240	72-110	240	50	50	19	RS12016	S6
JT40	JT40-TQC90-180	90-125	180	50	50	19	RS12016	S6
JT40	JT40-TQC90-225	90-125	225	50	50	19	RS12016	S6
JT50	JT50-TQC25-135	25-38	135	20	24	8	RS04005	S2
JT50	JT50-TQC30-165	30-42	165	24	28	8	RS05006	S2.5
JT50	JT50-TQC38-180	38-52	180	30	36	10	RS06008	S3
JT50	JT50-TQC42-210	42-56	210	34	40	10	RS06008	S3
JT50	JT50-TQC50-180	50-65	180	40	48	13	RS08012	S4
JT50	JT50-TQC50-240	50-65	240	40	48	13	RS08012	S4
JT50	JT50-TQC62-195	62-90	195	50	56	16	RS10012	S5
JT50	JT50-TQC62-270	62-90	270	50	56	16	RS10012	S5
JT50	JT50-TQC72-195	72-110	195	60	66	19	RS12016	S6
JT50	JT50-TQC72-285	72-110	285	60	66	19	RS12016	S6
JT50	JT50-TQC90-210	90-125	210	72	77	19	RS12016	S6
JT50	JT50-TQC90-300	90-125	300	72	77	19	RS12016	S6
JT50	JT50-TQC115-220	115-160	220	80	80	25	RS16016	S8
JT50	JT50-TQC115-300	115-160	300	80	80	25	RS16016	S8

- 镗刀头单独订购，根据加工要求接口 WSC×WSC 选配相应的镗刀头
Please order cartridges separately according to size of WSC×WSC

BT 倾斜型粗镗刀 (TQC)

BT Clino-form Rough Boring Tools(TQC)

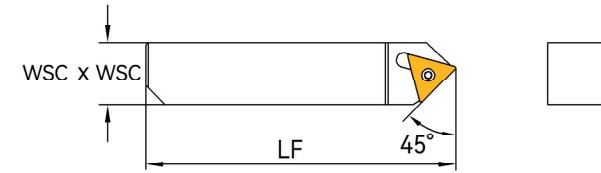


接口类型 Interface type	型号 Model	镗孔尺寸 DC Boring range	尺寸 Size(mm)				螺钉 Screw	扳手 Hex wrench
			LF	BD ₁	BD ₂	WSC×WSC		
BT40	BT40-TQC25-135	25-38	135	20	24	8	RS04005	S2
BT40	BT40-TQC30-165	30-42	165	24	28	8	RS05006	S2.5
BT40	BT40-TQC38-180	38-52	180	30	36	10	RS06008	S3
BT40	BT40-TQC42-210	42-56	210	34	40	10	RS06008	S3
BT40	BT40-TQC50-180	50-65	180	40	44	13	RS08012	S4
BT40	BT40-TQC50-225	50-65	225	40	44	13	RS08012	S4
BT40	BT40-TQC62-180	62-90	180	50	50	16	RS10012	S5
BT40	BT40-TQC62-240	62-90	240	50	50	16	RS10012	S5
BT40	BT40-TQC72-180	72-110	180	50	50	19	RS12016	S6
BT40	BT40-TQC72-240	72-110	240	50	50	19	RS12016	S6
BT40	BT40-TQC90-180	90-125	180	55	55	19	RS12016	S6
BT40	BT40-TQC90-225	90-125	225	55	55	19	RS12016	S6
BT50	BT50-TQC25-135	25-38	135	20	24	8	RS04005	S2
BT50	BT50-TQC30-165	30-42	165	24	28	8	RS05006	S2.5
BT50	BT50-TQC38-180	38-52	180	30	36	10	RS06008	S3
BT50	BT50-TQC42-210	42-56	210	34	40	10	RS06008	S3
BT50	BT50-TQC50-180	50-65	180	40	48	13	RS08012	S4
BT50	BT50-TQC50-240	50-65	240	40	48	13	RS08012	S4
BT50	BT50-TQC62-195	62-90	195	50	56	16	RS10012	S5
BT50	BT50-TQC62-270	62-90	270	50	56	16	RS10012	S5
BT50	BT50-TQC72-195	72-110	195	60	66	19	RS12016	S6
BT50	BT50-TQC72-285	72-110	285	60	66	19	RS12016	S6
BT50	BT50-TQC90-210	90-125	210	72	77	19	RS12016	S6
BT50	BT50-TQC90-300	90-125	300	72	77	19	RS12016	S6
BT50	BT50-TQC115-220	115-160	220	80	80	25	RS16016	S8
BT50	BT50-TQC115-300	115-160	300	80	80	25	RS16016	S8

- 镗刀头单独订购，根据加工要求接口 WSC×WSC 选配相应的镗刀头
Please order cartridges separately according to size of WSC×WSC

TQC 镗刀头

TQC Cartridges



型号 Model	镗孔尺寸 DC Boring range	尺寸 Size(mm)		刀片 Insert	螺钉 Screw	扳手 Hex wrench
		LF	WSC×WSC			
TQC08-029-45L	25-38	29	8	CP□□050204	L60M2.2×5	6IP
TQC08-045-45L	38-50	45	8	CP□□050204	L60M2.2×5	6IP
TQC10-045-45L	38-50	45	10	TC□□090204	L60M2.2×5	6IP
TQC10-060-45L	50-70	60	10	TC□□090204	L60M2.2×5	6IP
TQC13-060-45L	50-70	60	13	TC□□110204	L60M2.5×5.2	8IP
TQC13-081-45L	70-90	81	13	TC□□110204	L60M2.5×5.2	8IP
TQC16-075-45L	62-90	75	16	TC□□110204	L60M2.5×5.2	8IP
TQC16-106-45L	90-115	106	16	TC□□110204	L60M2.5×5.2	8IP
TQC19-088-45L	72-105	88	19	TC□□16T308	L60M3.5×8.8	15IP
TQC19-119-45L	105-135	119	19	TC□□16T308	L60M3.5×8.8	15IP
TQC19-150-45L	135-150	150	19	TC□□16T308	L60M3.5×8.8	15IP
TQC25-125-45L	105-140	125	25	TC□□16T308	L60M3.5×8.8	15IP
TQC19-169-45L	140-190	169	25	TC□□16T308	L60M3.5×8.8	15IP

- 刀片需单独订购
Inserts are sold separately